

scala[®]
**Infrared Ear and
Forehead Thermometer SC 53 FH**



CE
0598
MD

GB Instruction manual

Rev. 19/08/2021/GB

Please read this instruction manual carefully
before using your infrared thermometer

INTRODUCTION

Utilizing infrared technology, this thermometer takes temperatures in seconds by measuring heat generated by measuring heat generated by the ear or the surface skin of the forehead.

The manufacturer declare that the product is conform with the requirements of the regulations (EC) 1907/2006 (REACH) and 2011/65/EU (RoHS).

Its advantages include:

1. Multy functions: Ear/ Forehead/ Ambient/ Clock
2. Probe Cover Free
3. Waterproof Probe Design
4. One-second Reading
5. Auto power off for power saving
6. Low-battery Indicator
7. Warning indication for battery condition and measuring range.
8. Large LCD Display
9. Unique Stand Design
10. Memory function

IMPORTANT INFORMATION BEFORE USE

When using this product, please be sure to follow all the notes listed below. Any action against these notices may cause injury or affect the accuracy.

- ◆ Do not disassemble, repair, or remodel the thermometer.
- ◆ Be sure to clean the thermometer lens each time after usage.
- ◆ Avoid direct finger contact with the lens.

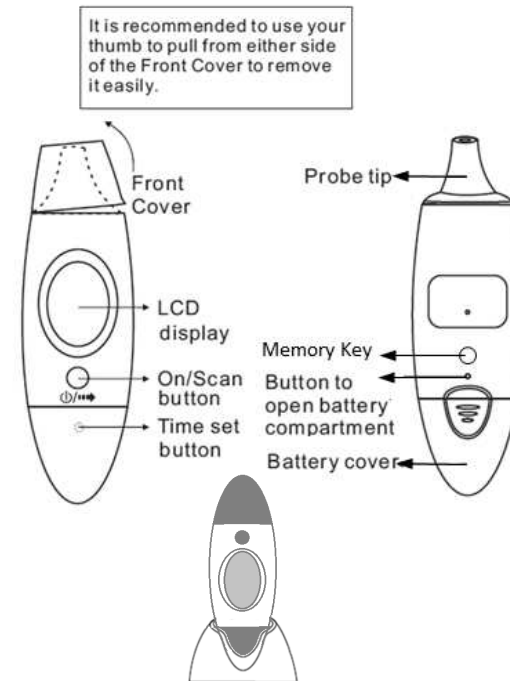
GB-2

- ◆ No modification of this equipment is allowed.
- ◆ It is recommended that user may take 3 temperatures. If they are different, use the highest reading.
- ◆ Do not expose the thermometer to extreme temperature, very high humidity, or direct sunlight.
- ◆ Avoid extreme shock or dropping the device.
- ◆ Before the measurement, patients and thermometer should stay in steady state room condition for at least 30 minutes.
- ◆ Avoid measuring temperature in 30 minutes after exercise, bathing, or returning from outdoor.
- ◆ To protect the environment, dispose of empty batteries at appropriate collection sites according to national or local regulations.
- ◆ It is ill-advised to disassemble the thermometer.
- ◆ Please use the thermometer solely for its intended purpose.
- ◆ Carefully hold the device when in use to avoid dropping the device.
- ◆ Allow one minute between successive measurements as slight variations may occur if measurements are taken over a short period of time. Use average temperatures instead.
- ◆ There are no absolute body temperature standards. Keep reliable records of your personal temperature to serve as a reference for judging a fever.

GB-3

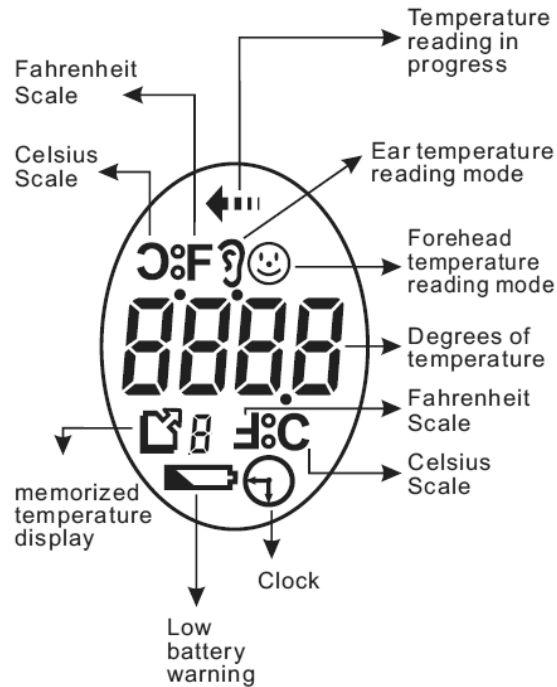
- ◆ Under any circumstances, the temperature taking result is ONLY for reference. Before taking any medical action, please consult your physician.

PRODUCT IDENTIFICATION



GB-4

DESCRIPTION OF LCD DISPLAY



GB-5

TIPS FOR MEASURING HUMAN TEMPERATURE

Bear in mind that the thermometer needs to have been in the room in which the measurement is taken for at least 30 minutes before use.

NOTE:

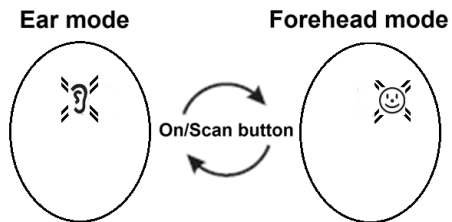
- ◆ Some people produce different readings in their left and right ear. In order to record temperature changes, always measure a person's temperature in the same ear.
- ◆ The ear thermometer may be used by children only under adult supervision. Measurement is usually possible over the age of 6 months. In infants under 6 months, the ear canal is still very narrow so the temperature of the eardrum often cannot be recorded and the result displayed is often too low.
- ◆ The measurement must not be taken in an ear affected by inflammatory diseases (e.g. discharging pus or secretion), after possible ear injuries (e.g. eardrum damage) or in the healing period after operative procedures. In all of these cases, please consult your doctor.
- ◆ Use of the thermometer on different persons can be inappropriate in the event of certain acute infectious diseases because of the possible spread of germs despite cleaning and disinfection. If you have any doubts, please consult your doctor.

GB-6

- ◆ This thermometer may only be used without a disposable protective cover.
- ◆ If you have been lying on one ear for some time, the temperature is slightly raised. Wait a little while or measure in the other ear.
- ◆ As ear wax can affect the measurement, you should clean the ear before measuring if necessary.

SETTING MEASUREMENT MODE

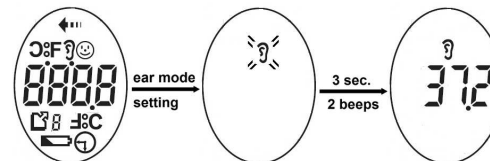
At Power off condition, press the On/Scan button to enter into measurement mode setting. The ear or forehead icon would flash to show the mode condition. Just press the On/Scan button again to change to another mode in 3 sec. (each change will be with a beep sound).




GB-7

MEASURING BODY TEMPERATURE IN THE EAR

- 1) Remove the front cover.
- 2) Press the On/Scan button for 1 second to switch the thermometer on. All screen data will display on screen. Then the measurement mode flashes on screen. If the icon shows forehead mode, please press On/Scan button again to change to ear mode. Then wait for 2 beep sounds to let you know the appliance is ready and followed by last temperature reading.

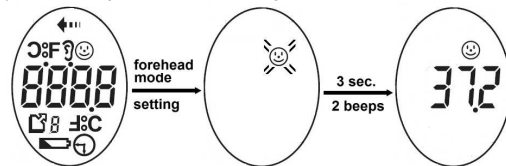


- 3) Make sure that the sensor tip and also the ear canal are clean. As the ear canal is slightly curved, you have to pull the ear slightly up and backwards before inserting the sensor tip. This is important so that the sensor tip can be pointed directly at the eardrum. 
- 4) Press the On/Scan button for 1 second and release, and then insert the probe tip into ear canal carefully.
- 5) The end of the measuring time is signaled with beep sound and the measured value appears on the display.

GB-8

MEASURING BODY TEMPERATURE IN THE FOREHEAD

- 1) The cap should be in position on the probe tip.
- 2) Press the On/Scan button. All screen data will display on screen. Then the measurement mode flashes on screen. If the icon shows ear mode, please press the On/Scan button again to change to forehead mode. Then wait for 2 beep sounds to let you know the appliance is ready and followed by last temperature reading.



- 3) When the beep sounds to let you know the appliance is ready, press the On/Scan button and maintain pressure.
- 4) Place the probe on your temple. Slide the probe across your forehead to the other temple, and then release pressure on button to stop temperature taking. You'll hear a beep and your temperature will come up on the screen.



Note: Forehead temperature may be affected by external climatic conditions. If in doubt, do not hesitate to take your ear temperature.

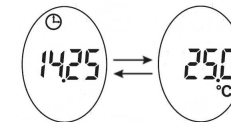
GB-9

SETTING THE TIME

- 1) At the first time of using this thermometer or when re-installing the battery, you may first set the clock time. Then, the ambient temperature measurement function will be automatically activated.
- 2) Open the battery cover, press the time set button, and then set the hour (when the hour numbers are blinking), then the minute (when the minute numbers are blinking) in sequence; and adjust the hour and minute to the correct time using the On/Scan button.

CLOCK TIME AND AMBIENT TEMPERATURE

- 1) There are two display modes when activate Clock function: Clock Time / Ambient temperature
- 2) After auto power off, the screen displays the time and temperature in an alternative way.



MEMORY FUNCTION

You can recall up to 10 stored measurements in memory.

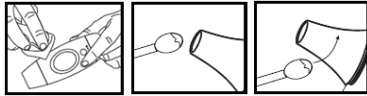
- Press the "Memory" key. The first reading displayed is the latest measurement stored in memory.
- Continue to press the "Memory" key to view the next previously stored measurement.
- Any new measurement will be recorded and the oldest memory deleted without you having to do anything.

GB-10

CARE AND MAINTENANCE

Lens/ Measurement Sensor: Gently clean with an alcohol swab. Do not use water to wash the thermometer lens directly.

Thermometer: Clean with a soft, dry cloth. Do not use water to rinse the device.



TECHNICAL SPECIFICATIONS

Measuring range: human thermometer: 35 to 42°C

Lo display: temperature at sensor <35 °C

Hi display: temperature at sensor > 42 °C

ambient thermometer: 15 to 35°C

Measurement duration: 2 to 3 seconds

Measurement accuracy: +/-0.2°C between the ranges of 35 °C and 42°C

Memory capacity: 10

Battery type: 1 no: CR 2032.

Battery display: The "■" symbol shows that the battery is spent.

Storage temperature: 10°C to 50°C.

GUARANTEE

We give a two-year guarantee from date of purchase. We will remedy all defects in workmanship or materials within the guarantee period. If, contrary to our expectations, the product or any of its parts show functional or material defects, please forward the carefully packed product to our Service Centre. To ensure quick handling of your product, please include your purchase receipt, a short description of the defect. Damage due to improper use, worn parts and consumables are not covered by the guarantee.

GB-11

DISPOSAL NOTE



Defect devices or devices which are taken out of operation at the end of their service life may still contain residues which could present a risk to the environment. Please dispose of the device in a suitable and correct way at a collection point for old electrical items.



Batteries must be disposed of correctly. There are containers for battery disposal at battery dealers and in communal collection points.

EXPLANATION OF SYMBOLS

| | |
|--|--|
| | Manufacturer |
| | CE-sign of a notified body (SGS Fimko Ltd., Finland) |
| | Medical Device |
| | EU representative |
| | Device classification type BF |
| | Power-on |
| | Humidity limits |
| | Temperature limits |
| | Disposal information |
| | Date of manufacture |
| | Consult the instruction for use |



Model no. TS8
AviTA Corporation
9F., No. 78, Sec 1, Kwang Fu Rd.,
San Chung Dist., New Taipei City, Taiwan (R.O.C.)
Made in P.R.C.



MDSS GMBH

Schiffgraben 41, 30175 Hannover, Germany
Importer SCALA Electronic GmbH, Ruhlsdorfer Str. 95,
14532 Stahnsdorf, Germany www.scala-electronic.de

GB-12